

OPT-104 Series Fast Ethernet Switch

1*10/100Base-Tx + 4*10/100Base-Tx (PoE)

1*10/100Base-Tx + 4*10/100Base-Tx

RoHS Compliant



>>Description

5-port Fast Ethernet switch, Conforms to IEEE 802.3, IEEE 802.3u standard, support port auto flip (Auto MDI / MDIX); Widely used in: Wireless AP coverage, network monitoring project, local area network construction, large hotel, school and the majority of enterprises and institutions of the network center data exchange use.

Application

- VoIP transmission, Intelligent Home Systems
- Urban Intelligent Traffic Monitoring System (ITS), Safe City, Wireless City
- Highway monitoring system, Electronic road monitoring, Capture system
- Large industrial enterprise security monitoring systems, network multifunction system
- Remote multimedia teaching / Campus monitoring, Video conferencing systems
- Building intercom, Wireless communications, Video surveillance

>>Main Features

- Complies with IEEE802.3, IEEE802.3u standard
- IEEE802.3at, IEEE802.3af PoE standard compliance
- Support PD detection and PD classification
- Supports auto duplex(HDX/FDX) auto MDI/MDIX function
- Auto MDI/MDI-X support on RJ-45 port
- Support port base VLAN
- Support class of service
- Support Max packet length 1552/1536 bytes
- Status LED for easy monitoring of device status
- Fanless design, Natural cooling

>> Specifications

Interface

- 4 x Ethernet+PoE port (RJ45) 10/100Base-Tx
- 1 x Ethernet port (RJ45) 10/100Base-Tx

Ethernet Port

- Cable: Cat 5/5e/6 UTP cable
- Available speed: force 10Mbps, force 100Mbps and auto-detective 10/100Mbps. Full-Duplex and Half-Duplex auto-negotiation
- Connectors: RJ-45 Connector; MDI/MDI-X connection auto-sensing

Standard

- IEEE802.3 (10Base-T)
- IEEE802.3u (100Base-TX)
- IEEE802.3af (Power over Ethernet Standard)
- IEEE802.3at (Power over Ethernet enhancements Standard)

Switch Properties

- MAC Table: 1K
- Packet Buffer: 448kbit
- Switching Delay: <5μs

PoE Specification

- Power Output: PoE 48V DC

- Power Pin Assignment: 1/2(+), 3/6(-) End-Span or 4/5(+), 7/8(-) Mid-Span optional

- PoE Power Budget: Each port provides max 30W feed power

LED Indicators

- Power Status, PoE Status, TX Link/Act

Power Requirement

- 9~52V DC, External AC to DC adapter

Physical Characteristics

- Housing: Metal enclosure
- Dimensions: 97 x 69 x 26mm
- Weight: 0.25kg

Environmental Limits

- Operating Temperature: -10°C to 70°C
- Storage Temperature: -20°C to 80°C
- Operating Humidity: 10% to 90% RH (non-condensing)
- Storage Humidity: 5% to 90% RH (non-condensing)

Agency Approvals

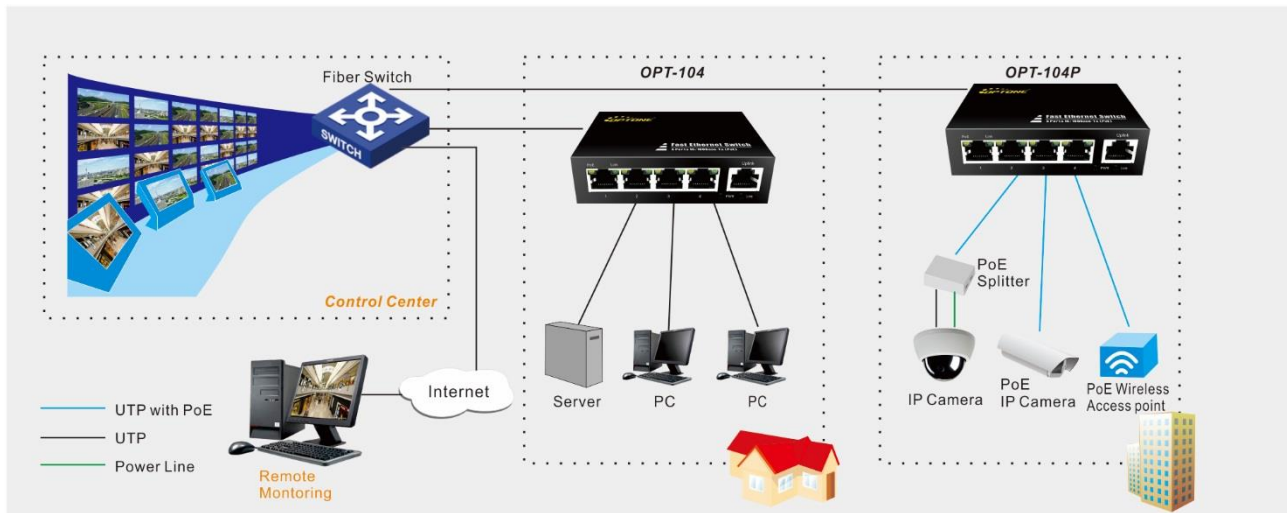
- FCC Part 15 of Class A & CE approved

Warranty

- 3 years

>> Applications

The following illustrates typical applications for the OPT-104 series. The actual distances will depend on several factors including the quality of cables used and the terminal equipment employed.





>>Ordering Information

OPT-104	1*10/100Base-Tx + 4*10/100Base-Tx
OPT-104P	1*10/100Base-Tx + 4*10/100Base-Tx (PoE)

>>Important Notice

Performance figures, data and any illustrative material provided in this data sheet are typical and must be specifically confirmed in writing by OPTONE before they become applicable to any particular order or contract. In accordance with the OPTONE policy of continuous improvement specifications may change without notice.

The publication of information in this data sheet does not imply freedom from patent or other protective rights of OPTONE or others. Further details are available from any OPTONE sales representative.

sales@optone.net
<http://www.optone.net>